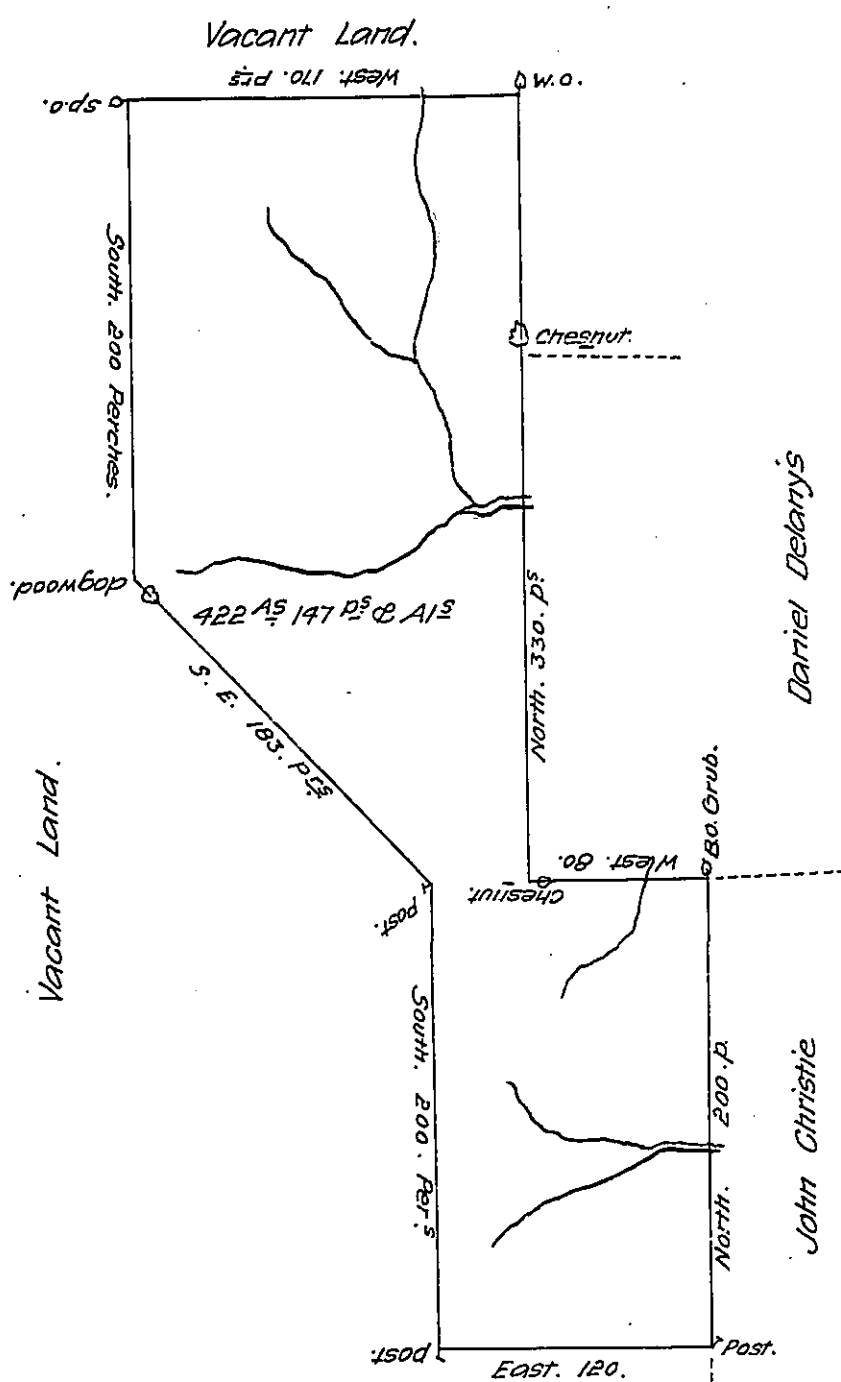


FORM No 1.



By Virtue of a Warrant dated 1<sup>st</sup> of July 1784. Surveyed the Seventeenth day of September 1785 unto Thomas Delary the above described Tract of Four hundred and twenty two Acres and 147 perches and the usual Allowance of six Acres pr. Cent Adjoining Land Surveyed to John Christie and Daniel Delary on the head branches of the West Branch of falls Creek in the County of Northumberland.

By W<sup>m</sup> Montgomery D.S.

To John Lukens Esq<sup>r</sup>  
Surveyor General.

IN TESTIMONY that the above is a copy of the original remaining on file in the Department of Internal Affairs of Pennsylvania, made conformably to an Act of Assembly approved the 16th day of February, 1833, I have hereunto set my Hand and caused the Seal of said Department to be affixed at Harrisburg, this twenty fifth day of February 1908.

*Henry A. ...*  
Secretary of Internal Affairs.

Northumberland  
or Luzerne  
W<sup>m</sup> BOHART